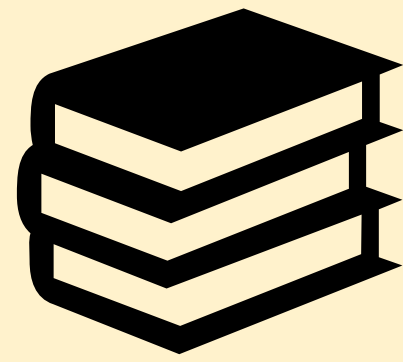


THE IMPACT OF SOCIO-DEMOGRAPHIC FACTORS ON EDUCATION DISPARITIES WITHIN SPECIFIC RELIGIOUS COMMUNITIES IN ISRAEL

Education level by Region



- Tel Aviv
 - 98% completed Highschool with matriculation.
 - 12% completed MA
- Jerusalem
 - 75% Completed Highschool with matriculation
 - 20% completed MA

Education by religion

Muslim	Jewish	Druze
•44%	•53%	•4%

“In 2020, about 13% of Jewish students attended “mixed” schools that combine both secular and religious studies”

45% Completed High School

5% Completed Elementary School

Education Level By Gender

58 %
Women outperform men in achieving tertiary education

In 2019, Israel ranked among the highest spenders on education in the OECD

42% Completed High School

8% Completed MA

Tools used:

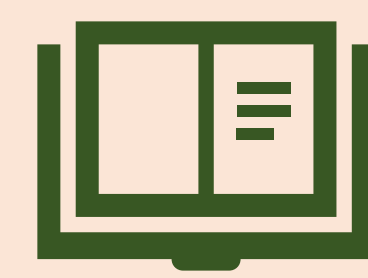
- Excel

Socio-dynamic factors considered:

- Religion, Region, Gender

Budget for the project:

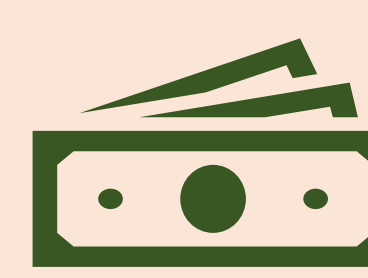
- \$6192



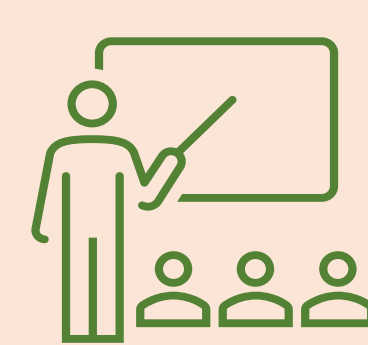
95% Literacy Rate



Women constitute around 54% of high education students



Pre-school Expenditure is \$8



12.6 Average years schooling

There are still discrepancies in Israel's education system, including social-demographic issues affecting education, such as gender, religion, and region.